

2016 JDRF One Walk®  
**Sunday, September 25, 2016**  
Hidden Lake Park, Merrillville, IN

**For more information:**

Mary Anne Bryan  
312-447-7954 | MBryan@jdrf.org



Register today at [walk.jdrf.org](http://walk.jdrf.org)

**THANK YOU** TO OUR LOCAL SPONSORS FOR  
HELPING US TURN **TYPE ONE** INTO **TYPE NONE**



**BOSAK AUTO**



*It's Better at Bosak!*

[BosakAuto.com](http://BosakAuto.com)



**WALK WITH US**  
TO CREATE A WORLD WITHOUT  
TYPE 1 DIABETES



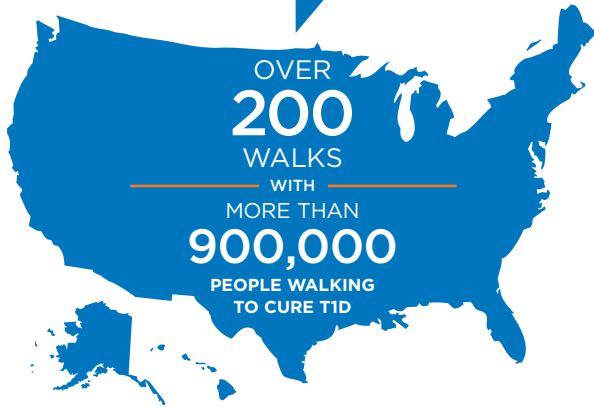
REGISTER TODAY  
[walk.jdrf.org](http://walk.jdrf.org)

Together, we can turn **type one** into  
**typenone**



We're the *stronger together* type

EVERY YEAR IN  
THE UNITED STATES,  
JDRF LEADS



## WE WALK

BECAUSE WE BELIEVE IN  
A WORLD WITHOUT T1D

JDRF One Walk™ is the largest type 1 diabetes (T1D) event in the world. Each year, it brings those affected by T1D together with friends, family, coworkers, and their local communities.

## GET INVOLVED IN JDRF ONE WALK

**Be the take the first step type.**

Register online at [walk.jdrf.org](http://walk.jdrf.org).

**Be the bring your friends and family type.**

Join a team or form your own.

**Be the inspire others to give type.**

Share your story and ask others to support your fundraising efforts.



## ABOUT T1D AND JDRF ONE WALK

Type 1 diabetes (T1D) is an autoimmune disease that affects both children and adults. Unrelated to diet or lifestyle, it requires never-ending management, a lifelong dependence on injected insulin, and creates a constant worry of life-threatening complications.

Since 1992, JDRF One Walk has raised more than \$1 billion to support research that improves the lives of people with T1D around the world.